

---

Subject: Runtime DB

Posted by [Tobias Stockmanns](#) on Tue, 29 May 2007 08:48:36 GMT

[View Forum Message](#) <> [Reply to Message](#)

---

Hi Simulators,

is somebody using the runtime DB to store and retrieve simulation parameters? I need some informations how to use it.

Cheers,

Tobias

---

---

Subject: Re: Runtime DB

Posted by [Stefano Spataro](#) on Tue, 29 May 2007 09:06:54 GMT

[View Forum Message](#) <> [Reply to Message](#)

---

Don't look at me...

---

---

Subject: Re: Runtime DB

Posted by [Jens Sören Lange](#) on Tue, 29 May 2007 14:43:29 GMT

[View Forum Message](#) <> [Reply to Message](#)

---

Hi Tobias,

is that what you want to do ?

(e.g. from the emcsim.C)

```
CbmRuntimeDb *rtdb=fRun->GetRuntimeDb();
CbmParRootFileIo* output=new CbmParRootFileIo(kParameterMerged);
output->open("simparams.root");
rtdb->setOutput(output);
rtdb->saveOutput();
rtdb->print();
```

And there is more in the wiki.

<http://wiki.gsi.de/cgi-bin/view/Pandacomputing/PandaRootDatabase>

(I just put there the upper part, the more detailed part was written by an unknown author...)

Soeren

---

---

Subject: Re: Runtime DB

Posted by [Dima Melnychuk](#) on Tue, 29 May 2007 17:00:04 GMT

[View Forum Message](#) <> [Reply to Message](#)

---

Hi Tobias,  
The most detailed description concerning runtime DB is in the presentation of Denis Bertini which he gave at Frascati workshop.  
You can find his talk on

<http://wiki.gsi.de/cgi-bin/view/Pandacomputing/TutorialWorkshopFrascati2006>

under the title "Parameter Database Tutorial".

Dima

---

**Subject: Re: Runtime DB**  
Posted by [Sebastian Neubert](#) on Fri, 26 Oct 2007 09:58:48 GMT  
[View Forum Message](#) <> [Reply to Message](#)

Hi!

I am trying to use the file I/O of the RuntimeDB following the tutorial from the Wiki and looking at what was done for the emc and the mvd.

I note that in contrast to what the tutorial says both detectors do not use the activateParlo(..) method. I conclude that it is not really needed anymore (??)

However - although I do not find differences in my implementation to emc or mvd - the TpcDigiPar container is not being initialized and when I try to access it in the Init() of a task it crashes consequently.

Any ideas?

Sebastian.

---

**Subject: Re: Runtime DB**  
Posted by [Sebastian Neubert](#) on Fri, 26 Oct 2007 11:43:23 GMT  
[View Forum Message](#) <> [Reply to Message](#)

Hi!

I have tracked down the problem to the fact that i want to store strings in the parameter file (and this does not work). How can I do that?

Cheers! Sebastian.

---

**Subject: Re: Runtime DB**  
Posted by [Sebastian Neubert](#) on Fri, 26 Oct 2007 11:55:15 GMT  
[View Forum Message](#) <> [Reply to Message](#)

Hi!

For the moment I will create a workaround using integers as indexes into (yet another) config file where I store the strings.

This is quite cumbersome so I request that strings be supported by the database if there is no major point against this.

Cheers! Sebastian.

---

---

Subject: Re: Runtime DB

Posted by [Sebastian Neubert](#) on Fri, 26 Oct 2007 16:02:08 GMT

[View Forum Message](#) <> [Reply to Message](#)

---

Yet another question:

I want to store my TpcDigiPar in the root db-file, so that it will be automatically available in the reconstruction. The storage works.

However it seems as if I cannot initialize digipar from the root file. My question: this should be no general problem, should it?

Cheers! Sebastian.

---

---

Subject: Re: Runtime DB

Posted by [Sebastian Neubert](#) on Tue, 30 Oct 2007 10:10:18 GMT

[View Forum Message](#) <> [Reply to Message](#)

---

Hi!

Storage and read from ROOT file solved.

S.

---

---

Subject: Re: Runtime DB

Posted by [Sebastian Neubert](#) on Tue, 30 Oct 2007 10:20:49 GMT

[View Forum Message](#) <> [Reply to Message](#)

---

A General question:

How does the RuntimeDB handle multiple reprocessing of the same(!) run?

The following use-case is very common at the moment: I have an MC-data file and want to digitize it several times with different parameter sets to do Detector-Studies. In the reconstruction and in the analysis stages I might also want to try out several sets of settings. Moreover I expect the database to ensure, that when I look at one event for analysis I will get the correct parameters, which have been used for digitization (reco... etc.).

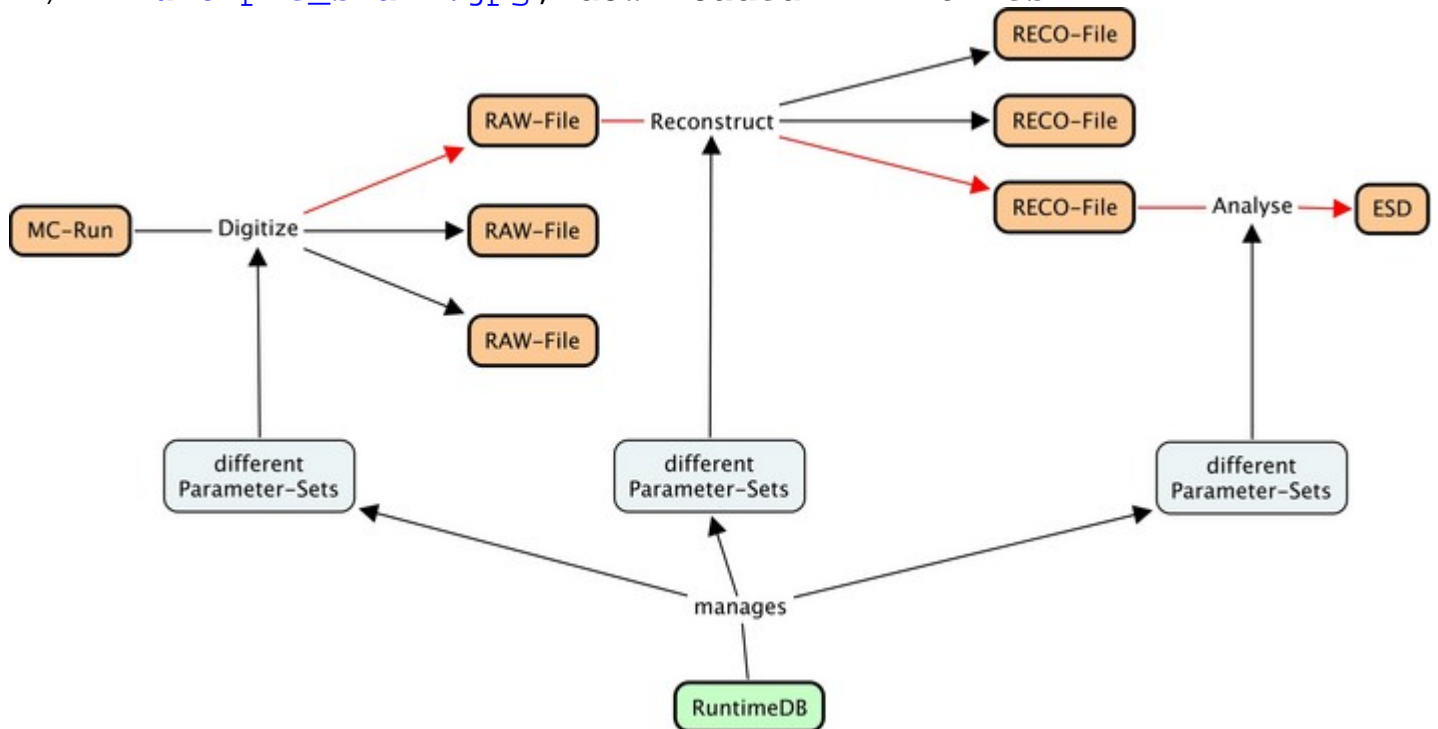
How is this handled?

Cheers! Sebastian.

Illustration of problem:

## File Attachments

1) [DBmultiple\\_small.jpg](#), downloaded 1474 times



---

Subject: Re: Runtime DB

Posted by [Dima Melnychuk](#) on Tue, 30 Oct 2007 11:04:31 GMT

[View Forum Message](#) <> [Reply to Message](#)

---

Hi Sebastian,

May be I do not understand your question correctly, but I can guess that it is solved in the way that each set of parameters can have different versions.

And you can use specific set of parameters by asking specific version.

You can look into presentation of Denis Bertini from Frascati Workshop, at the page 10 it is described version management with root files.

Or do you mean something different?

Dima

---

---

Subject: Re: Runtime DB  
Posted by [Sebastian Neubert](#) on Tue, 30 Oct 2007 11:38:46 GMT  
[View Forum Message](#) <> [Reply to Message](#)

---

Hi Dima!

You are absolutely correct, that there is support for different versions.

BUT: a version in the root file corresponds to one RunID. The RunID is assigned during the monte carlo. That means all files that are produced from one mc-file will have the same runID  
-> will use the same version of the parameters.

At least that is how I understand it!

Cheers! Sebastian.

---

---

Subject: Re: Runtime DB  
Posted by [Dima Melnychuk](#) on Wed, 31 Oct 2007 13:05:48 GMT  
[View Forum Message](#) <> [Reply to Message](#)

---

Hi Sebastian,

Did you manage to store strings in Runtime-DB already?  
I tried and it works for me. If you haven't solved it yet I can shortly describe how I did it.

Dima

---

---

Subject: Re: Runtime DB  
Posted by [Sebastian Neubert](#) on Wed, 31 Oct 2007 13:12:28 GMT  
[View Forum Message](#) <> [Reply to Message](#)

---

Cool Dima!  
Tell me, please!

---

---

Subject: Re: Runtime DB  
Posted by [Dima Melnychuk](#) on Wed, 31 Oct 2007 14:43:15 GMT  
[View Forum Message](#) <> [Reply to Message](#)

---

I will describe how I stored string in parameter file on example of emc. I don't upload the code to svn, since it was just a test.

1. In PndEmcRecoPar.h defined data member

```
Text_t fEmcClusterPosMetodText[20];
```

2. In PndEmcRecoPar.cxx, in PndEmcRecoPar::putParams(CbmParamList \*list)

```
list->add("EmcClusterPosMethodText",fEmcClusterPosMethodText,20);
```

3. In PndEmcRecoPar::getParams(CbmParamList \*list)

```
if (!list->fill("EmcClusterPosMethodText",fEmcClusterPosMethodText,20)) return kFALSE;
```

4. In emc.par file defined the line  
EmcClusterPosMethodText:s lilo

And that's it in principle.

Dima

---

---

Subject: Re: Runtime DB

Posted by [Sebastian Neubert](#) on Wed, 31 Oct 2007 14:50:44 GMT

[View Forum Message](#) <> [Reply to Message](#)

---

Hi Dima!

This is exactly how I tried it... strange. I probably made a stupid mistake. Thanks anyway! I keep on trying!

Cheers! Sebastian.

---

---

Subject: Re: Runtime DB

Posted by [Mohammad Al-Turany](#) on Tue, 06 Nov 2007 14:55:39 GMT

[View Forum Message](#) <> [Reply to Message](#)

---

Hi,

Sorry that I did not answer this before, but I saw it first last week and I was very busy with other problems, any way I have a few remarks:

BUT: a version in the root file corresponds to one RunID. The RunID is assigned during the monte carlo. That means all files that are produced from one mc-file will have the same runID-> will use the same version of the parameters.

This is not completely true! when you write out your parameters you call CbmParSet::setInputVersion(Int\_t, Int\_t):  
e.g:

```
PndConstField *fc= (PndConstField *)fField;  
PndConstPar *cp = (PndConstPar*)  
rtdb->getContainer("PndConstPar");  
cp->SetParameters(fc);  
cp->setInputVersion(fRun->GetRunId(),1);
```

The second integer is the version number!

So for one runId you can have more versions, technically speaking, this is presented by a cycle number in ROOT file. the disadvantage of this is that each time you create a new file it will start counting from 1! and that you have to take care your self about this version number (i.e two root files could have same runId and version number eventhough different parameter sets).

The other and better way to do this is to use the so called context, where you can set a text description to your parameter set. This will be saved with the same RunId but different context which you can use in the initialization. I will try to write a simple example of how to use this as soon as possible!

regards

Mohammad

---

Subject: Re: Runtime DB  
Posted by [Sebastian Neubert](#) on Tue, 06 Nov 2007 15:11:28 GMT  
[View Forum Message](#) <> [Reply to Message](#)

Hi Mohammed!

Thanks for your reply!  
I understand it much better now. So the runId is not mapped to the version number.

The possibility to use a certain context seems very interesting to me! I had seen it in the code, but was not sure how to make use of it. An example would be most welcome!

Cheers! Sebastian.

---

Subject: Re: Runtime DB  
Posted by [Sebastian Neubert](#) on Sat, 10 Nov 2007 09:33:18 GMT  
[View Forum Message](#) <> [Reply to Message](#)

Hey!

Just a follow up question: You said, that when using version ids the user has to keep track of the version himself.

Is the same true when using the context?

If so, we urgently need to discuss the database issue. I am running detector study jobs and already begin to feel the need for database support.

To be more specific: I would like the database to deliver the right parameters for an event without me having to worry about it. I would like to have this functionality:

\* Have ONE database which is always used. The name of the database(file) is the only thing I specify in my scripts.

\* To add parameters to the database I use the available mechanism to create Par-Objects from text-file.

\* I expect those Par-Objects to be available in any proceeding step of data-treatment, without any more user intervention.

If any of this is not supported please tell me soon, because then I would need to develop something!

Cheers! Sebastian.

---