
Subject: Re: Bump splitting: new endcap vs. old endcap
Posted by [Dima Melnychuk](#) on Fri, 20 Feb 2009 15:32:04 GMT
[View Forum Message](#) <> [Reply to Message](#)

Hi all,

With the new changes, made by Ola in creation of emc forward endcap geometry, the bump splitting gives reasonable results.

For the 500 events 5 GeV pi0 generated in theta [10;20] degree an phi in range [0;360] degree.

pi0 opening angle:

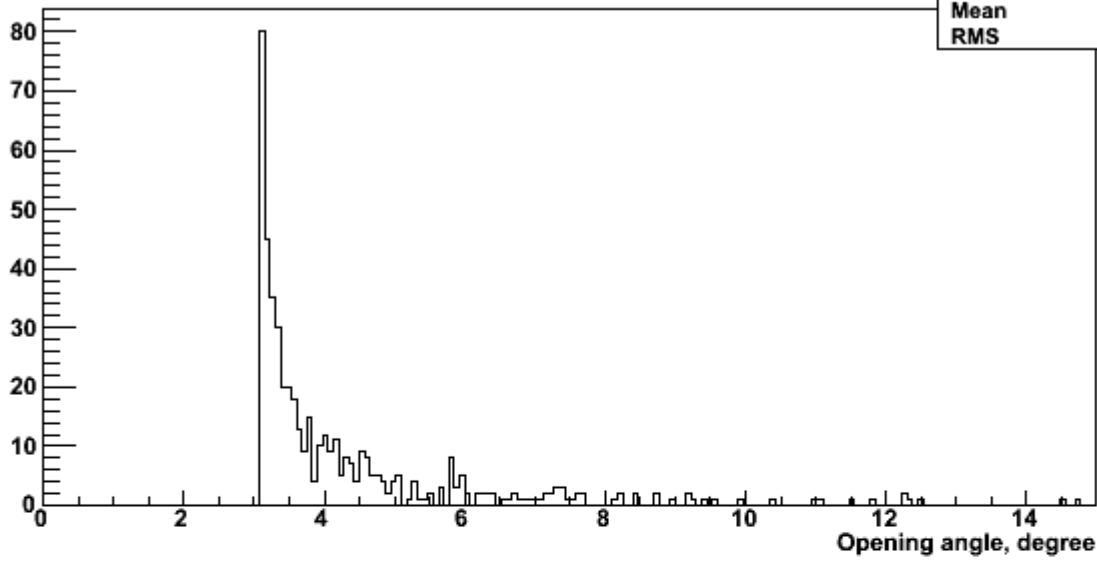
and reconstructed invariant mass:

Dima

File Attachments

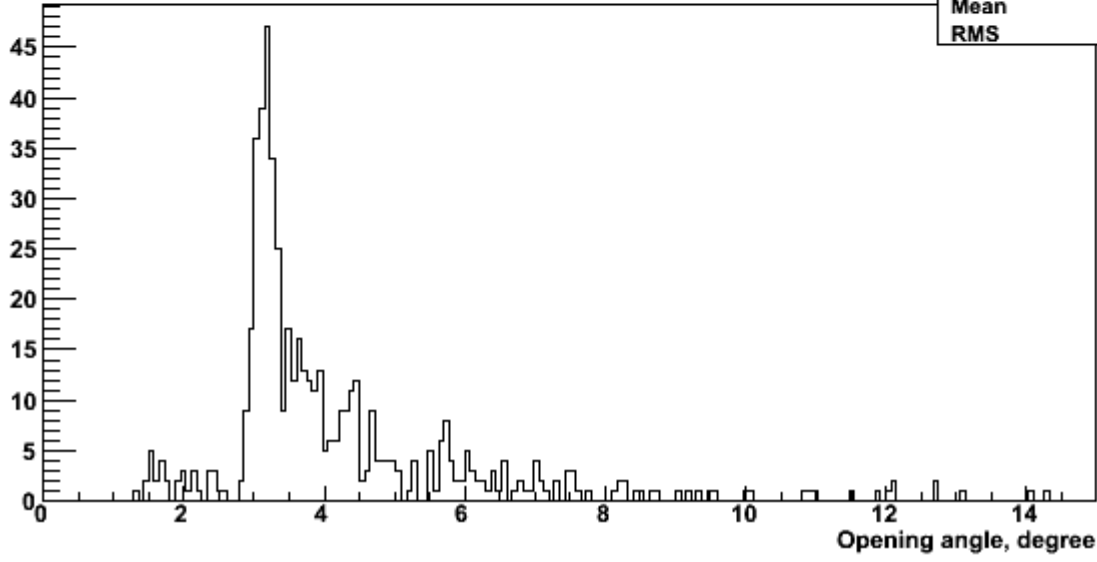
1) [pi0_angle.png](#), downloaded 1255 times

MC truth: opening angle of π^0



h MC_angle	
Entries	495
Mean	4.32
RMS	1.824

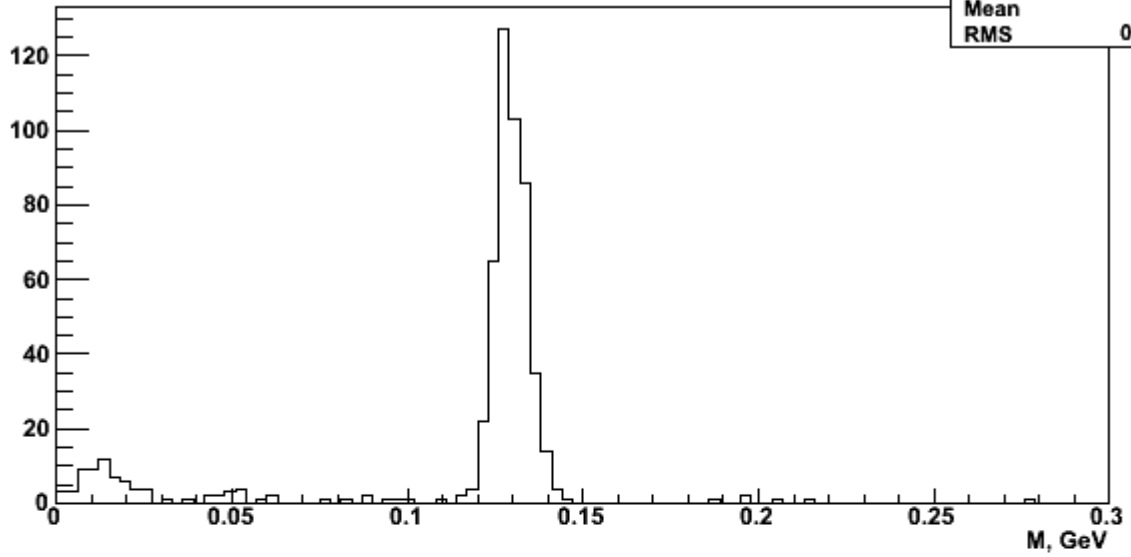
reconstructed opening angle of π^0



h_angle	
Entries	557
Mean	4.216
RMS	1.94

2) [pi0_mass.png](#), downloaded 1141 times

Invariant mass



Invariant mass MC

