

---

Subject: Cathode Wire Quality

Posted by [Christian Lippmann](#) on Tue, 18 May 2004 14:31:19 GMT

[View Forum Message](#) <> [Reply to Message](#)

---

Hi everybody,

since some of the ordered wires show some minor quality it makes sense to make some REM images we took at GSI available to everybody. So here we show three Cathode Wire as an example to show good and bad wires.

TK003: Some grooves are visible and pieces of metal sticking out, which is not nice. However, some people claim that one could live with a wire like that. The visible marks are probably due to an overused drawing die. Usually they are visible only on one side of the wire.

TK006: A perfect Cathode wire

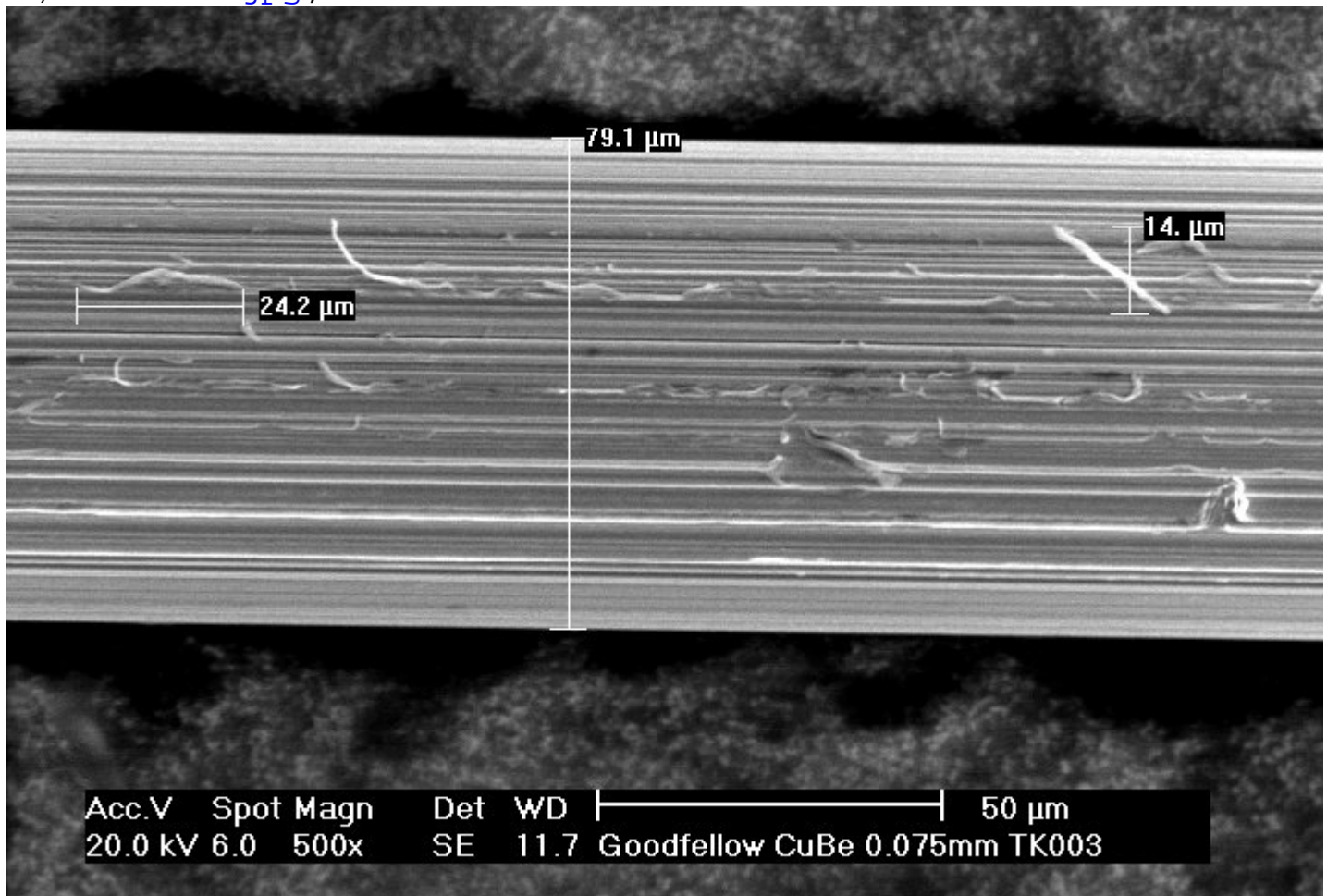
TK007: Again some grooves, acceptable.

The images are attached here. In case you can not view them (under windows) you need to save them to your disk. Then they can be viewed.

---

### File Attachments

1) [Tk003-4.jpg](#), downloaded 2412 times



2) [TK015-1.TIF](#), downloaded 1501 times

3) [TK007-2.TIF](#), downloaded 1472 times

---