
Subject: Re: Ideal Tracking Bugs(?) when using FairLinks
Posted by [Jennifer Pütz](#) on Wed, 20 May 2015 13:26:36 GMT
[View Forum Message](#) <> [Reply to Message](#)

Hi,

I switched the Kalman Filter off and the events looking fine.
Below there is another event, for which the ideal tracking without the Kalman Filter is working fine. But if I switch on the Kalman Filter the first and last hit are changing.

I'm looking at the track with the highlighted points.

Without Kalman:

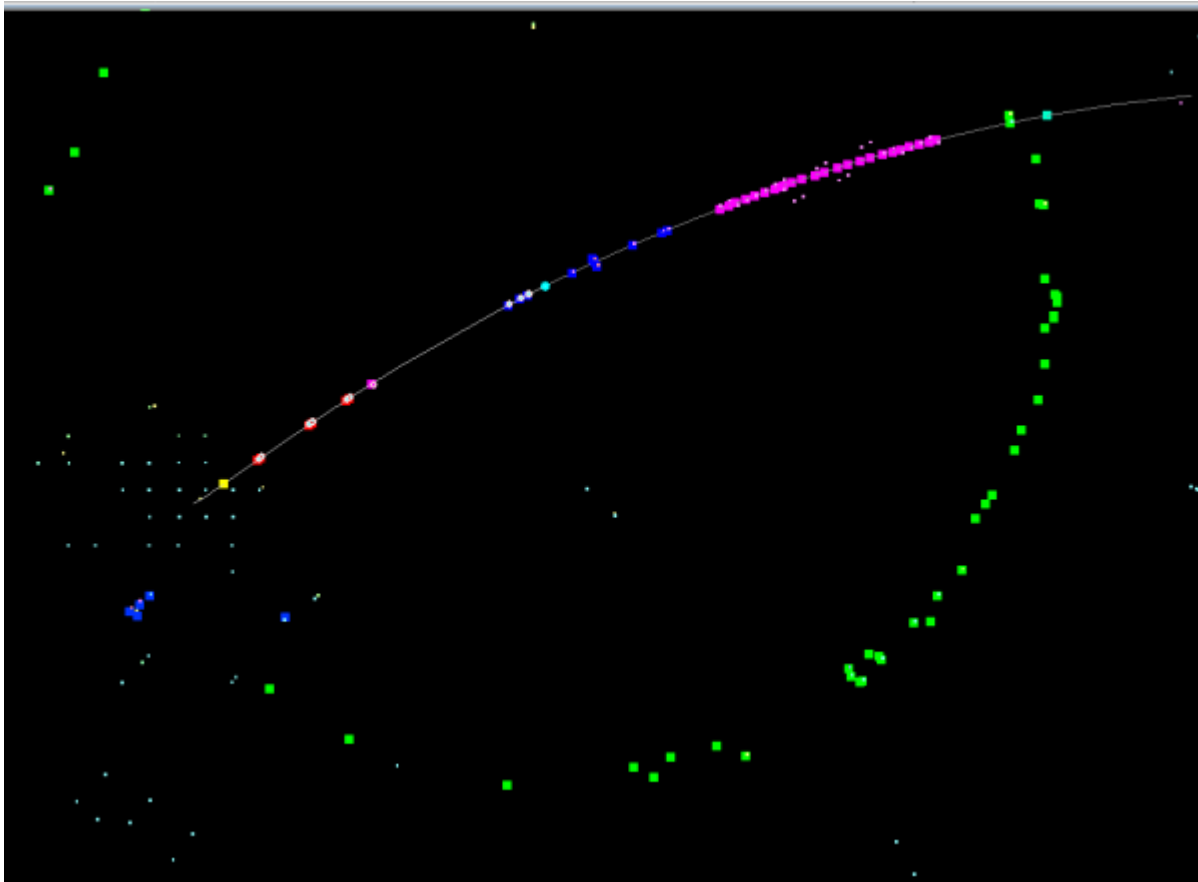
With Kalman:

Cheers,

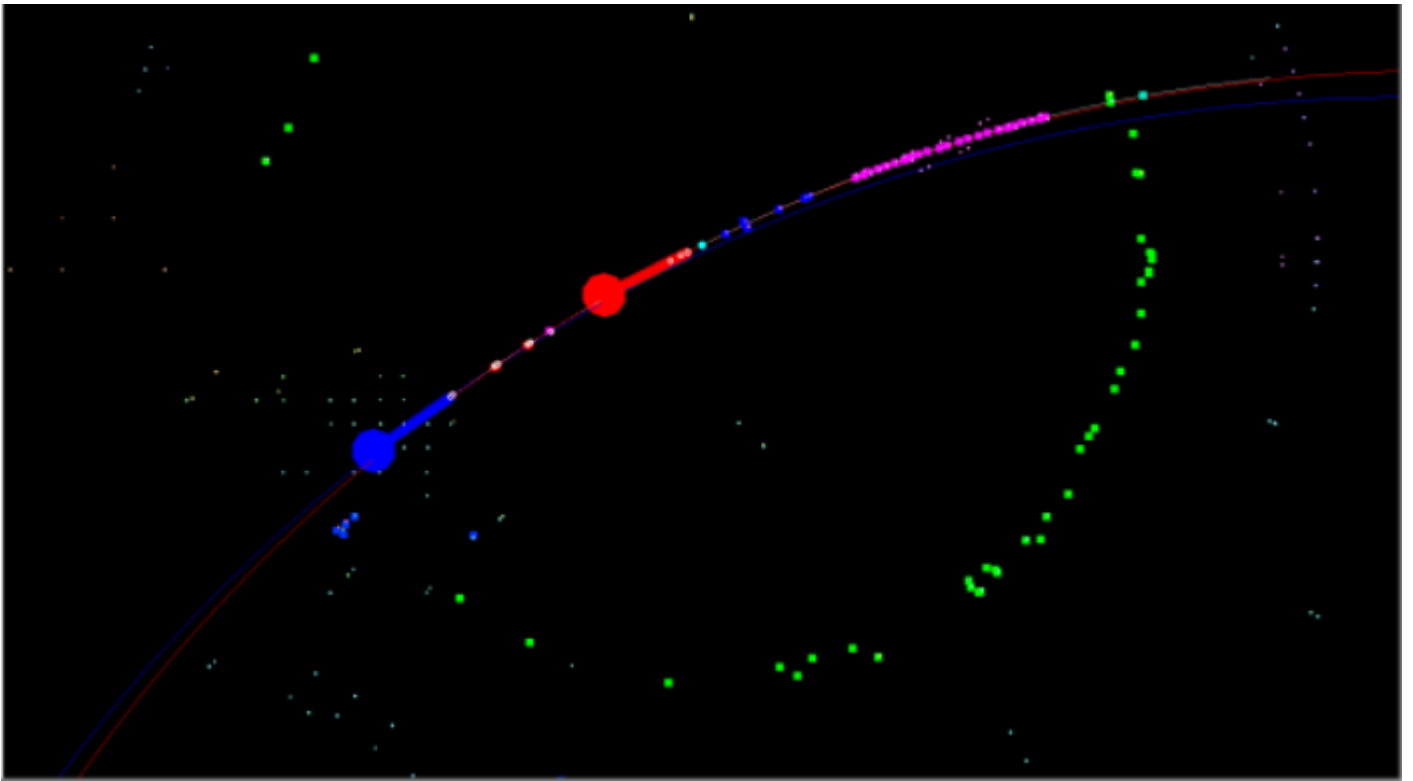
Jenny

File Attachments

1) [2pi_100_events_event_82.png](#), downloaded 473 times



2) [2pi_100_events_event_82_idealTrack.png](#), downloaded 505 times



3) [2pi_100_events_event_82_idealTrack_with_kalman_filter.png](#)
, downloaded 488 times

