

---

Subject: Re: Ideal Tracking Bugs(?) when using FairLinks  
Posted by [Jennifer Pütz](#) on Wed, 20 May 2015 13:26:36 GMT  
[View Forum Message](#) <> [Reply to Message](#)

---

Hi,

I switched the Kalman Filter off and the events looking fine.  
Below there is another event, for which the ideal tracking without the Kalman Filter is working fine. But if I switch on the Kalman Filter the first and last hit are changing.

I'm looking at the track with the highlighted points.

Without Kalman:

With Kalman:

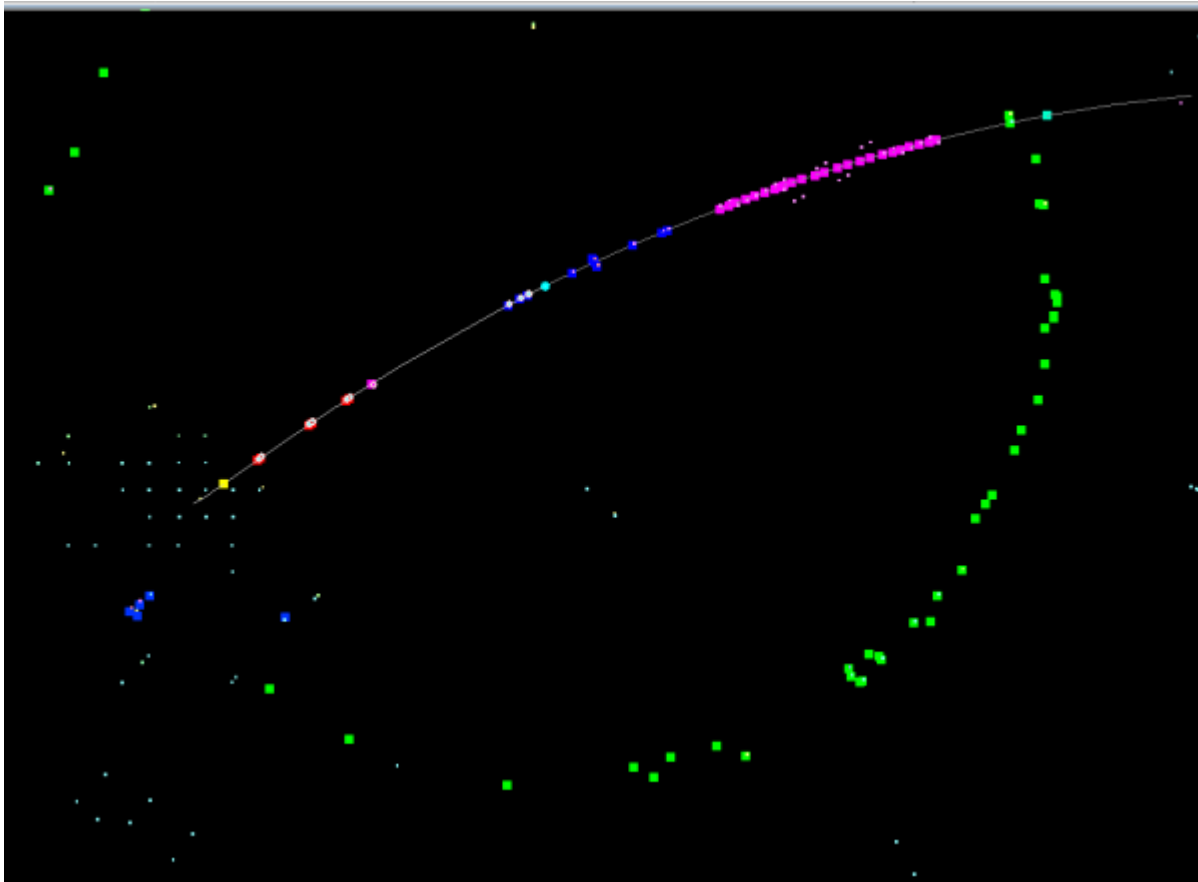
Cheers,

Jenny

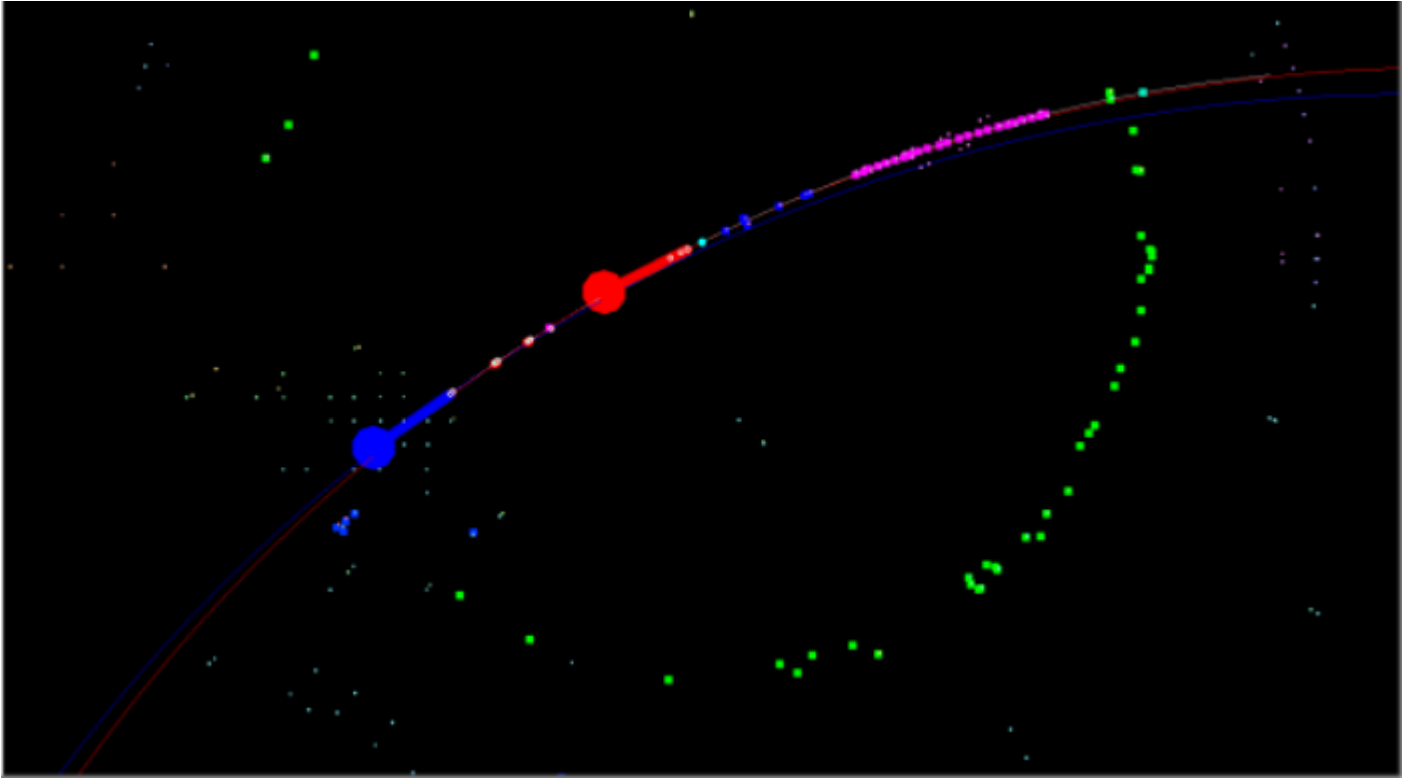
#### File Attachments

---

1) [2pi\\_100\\_events\\_event\\_82.png](#), downloaded 1034 times



2) [2pi\\_100\\_events\\_event\\_82\\_idealTrack.png](#), downloaded 1041 times



3) [2pi\\_100\\_events\\_event\\_82\\_idealTrack\\_with\\_kalman\\_filter.png](#)  
, downloaded 1012 times

