
Subject: Re: FRS Calibration Issue
Posted by [SMilne](#) on Mon, 19 Jan 2015 18:08:38 GMT
[View Forum Message](#) <> [Reply to Message](#)

Hey Liliana!

Sorry about that, I've now attached the zoomed in version and yes, I guess not all the A/Q lines are so straight. I also attached the 43Ti id plot just for your interest, it seems fine apart from the additional blobs.

Yeah sure, you are right about that, though it may become much more important for the 46Cr case, where stats are not in such an abundance.

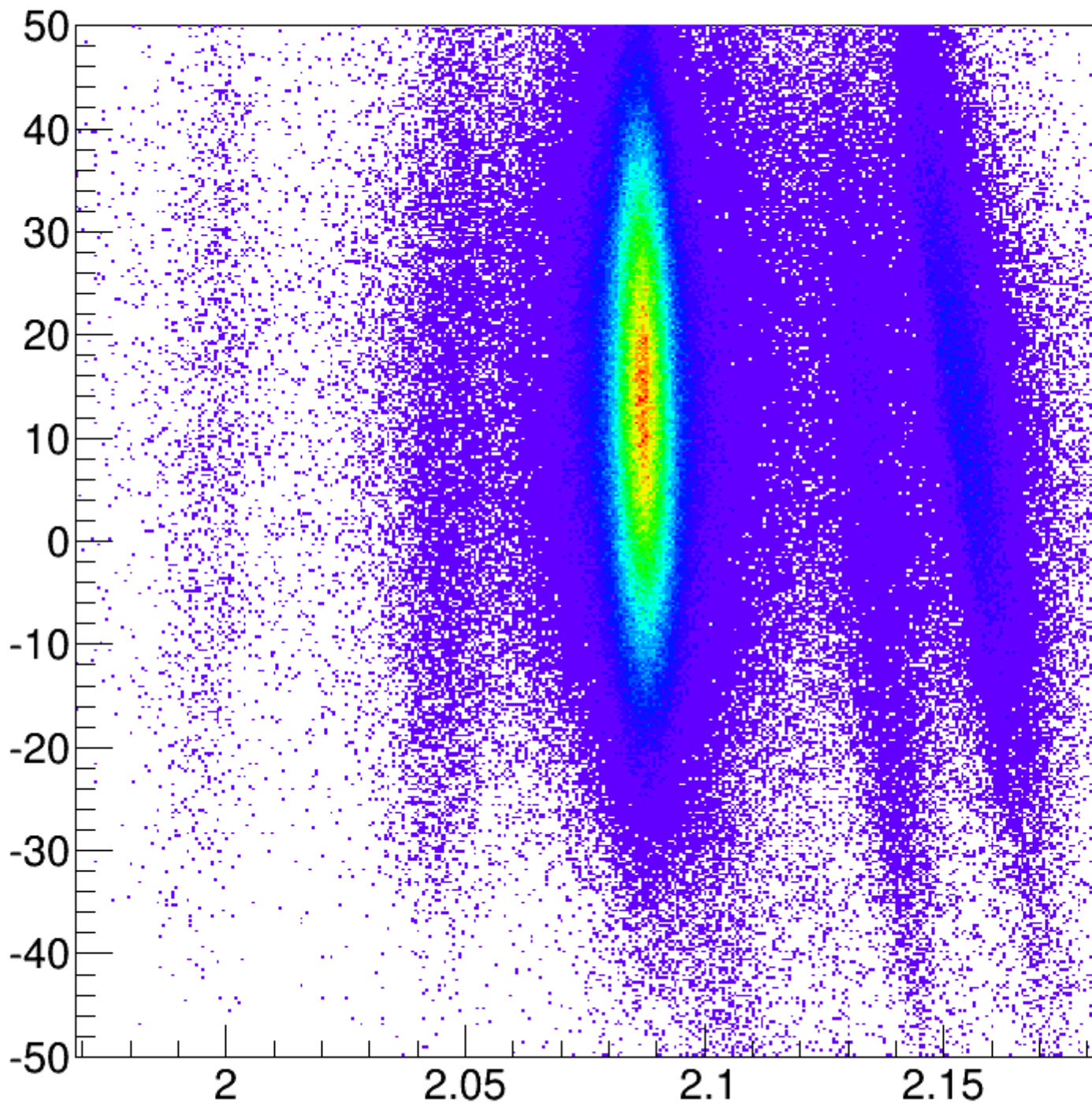
Thanks, I'll give it a proper read over tomorrow.

Thanks again for your help!
Scott

File Attachments

1) [46Ti-AoQvsS4.png](#), downloaded 897 times

AoQ_vs_x_S4



2) [43Ti-FRS-PID-TPCs.png](#), downloaded 880 times

^{43}Ti : HighLevel_particle_incoming_Z_value:HighLevel_particle_in

