
Subject: Re: FRS Calibration Issue
Posted by [SMilne](#) on Wed, 24 Sep 2014 10:05:46 GMT
[View Forum Message](#) <> [Reply to Message](#)

Hi Liliana!

Yeah, I double checked and do indeed get the same numbers.

I assume you meant the number of counts in both 58Ni blobs either using TPCs or Scintillator positions, I get:

TPC: 1.612E4

Scintillator: 3.247E4

Obviously I still need to make a better job of these calibrations, judging from my 46Ti Frs Ids below, before the calibration and after the calibration. Also I forgot to mention, but although my Z is perfect for the Ni calibration runs, it comes out as ~22.5 for the 46Ti, perhaps this is not so unusual, the Kr calibrations resulted in the same.

As for a close up, with log Z:

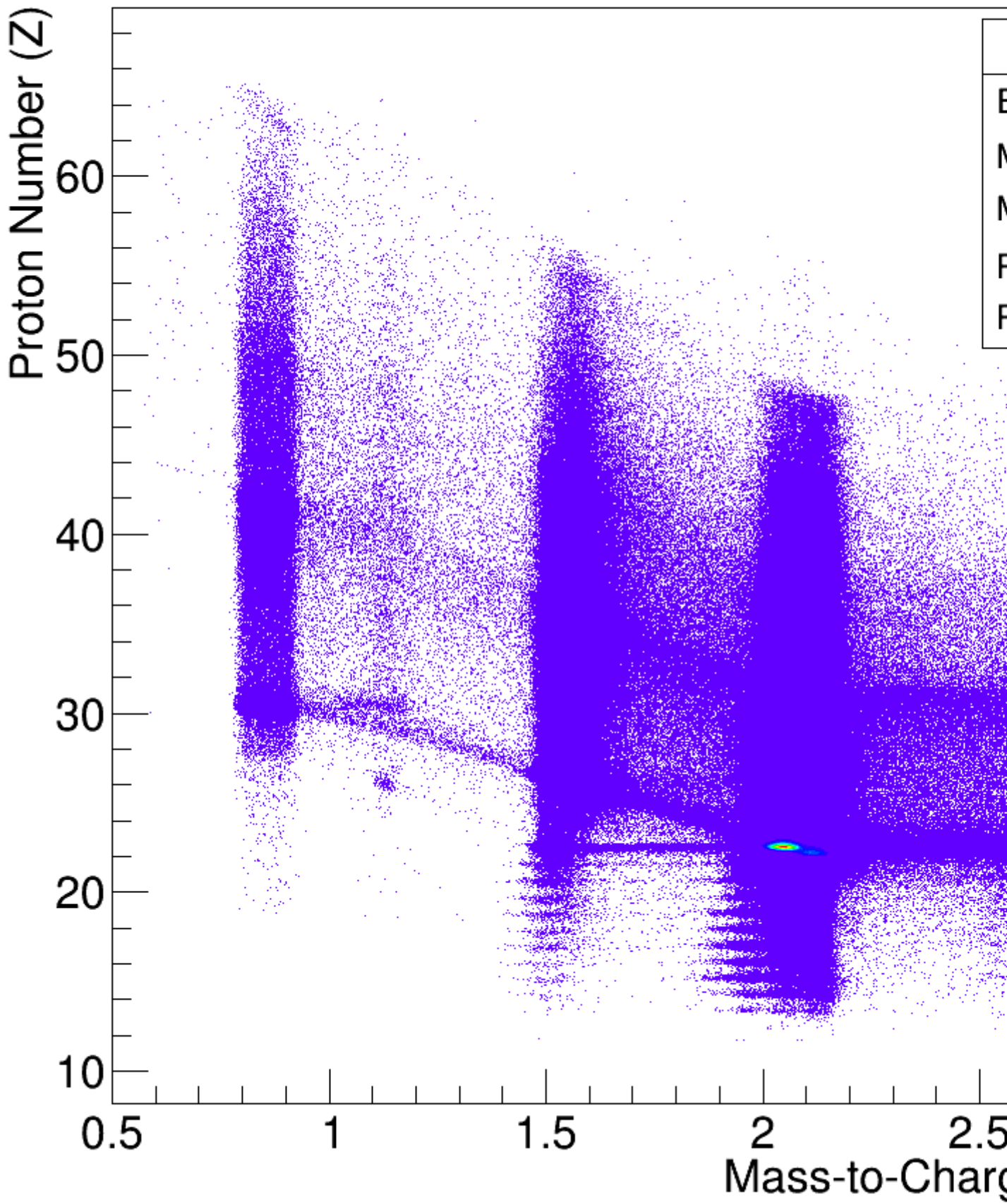
As for the energy left vs energy right of Sc21 and Sc41:

Thanks,
Scott

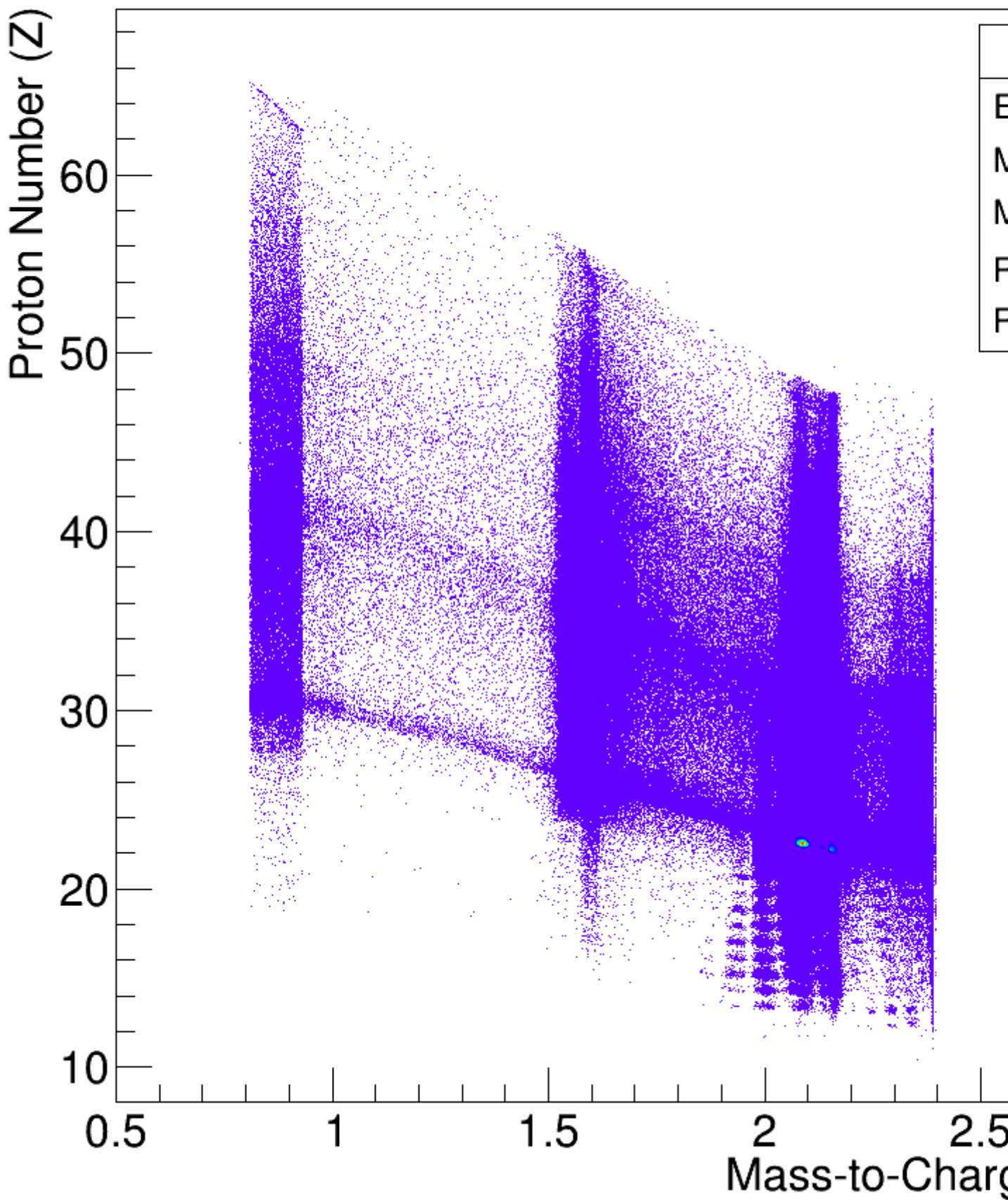
File Attachments

1) [46Ti-FrsId-PreCal.png](#), downloaded 705 times

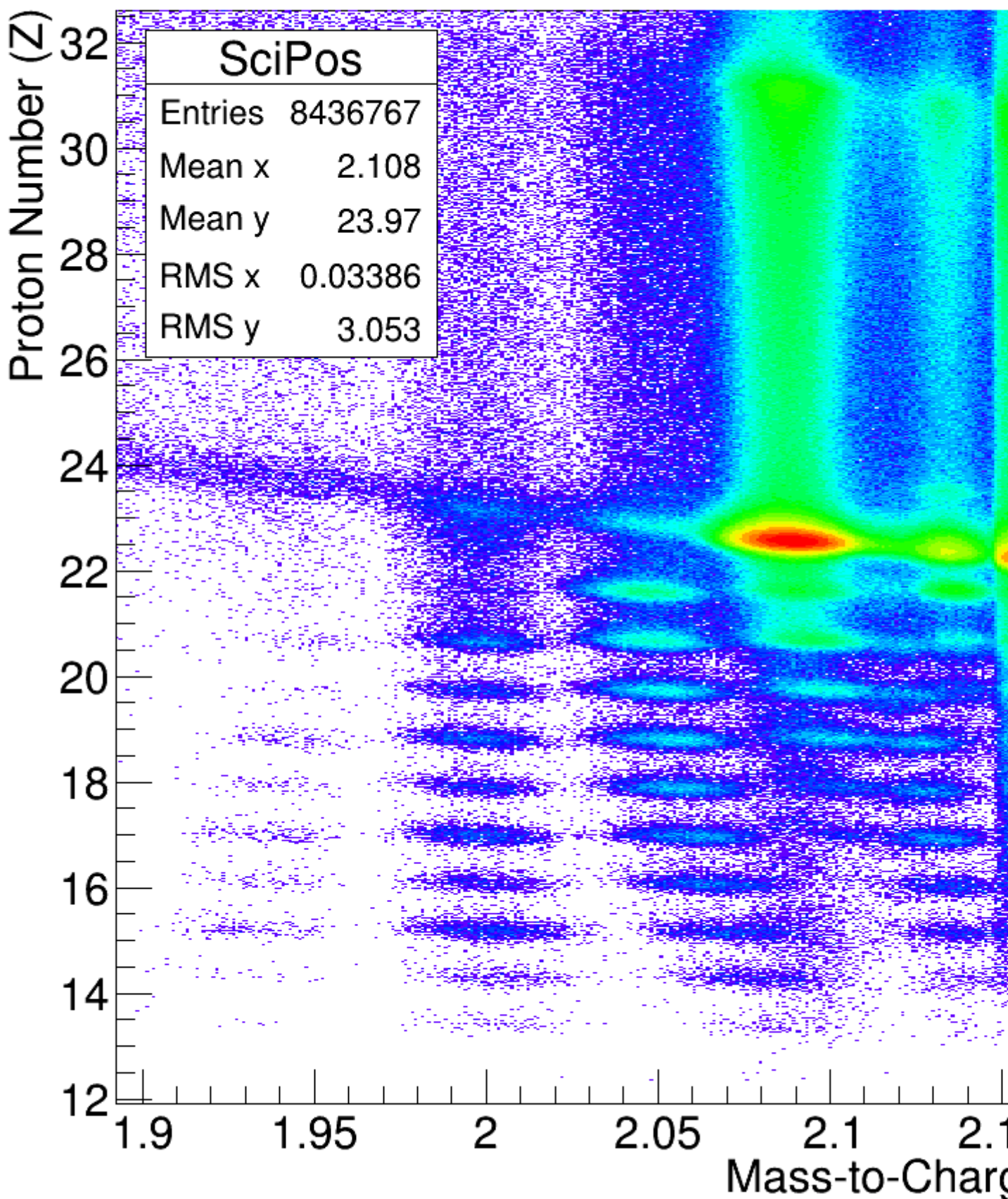
FRS PID - ^{46}Ti Setting (Before Scintillator)



FRS PID - ^{46}Ti Setting (After Scintillator)

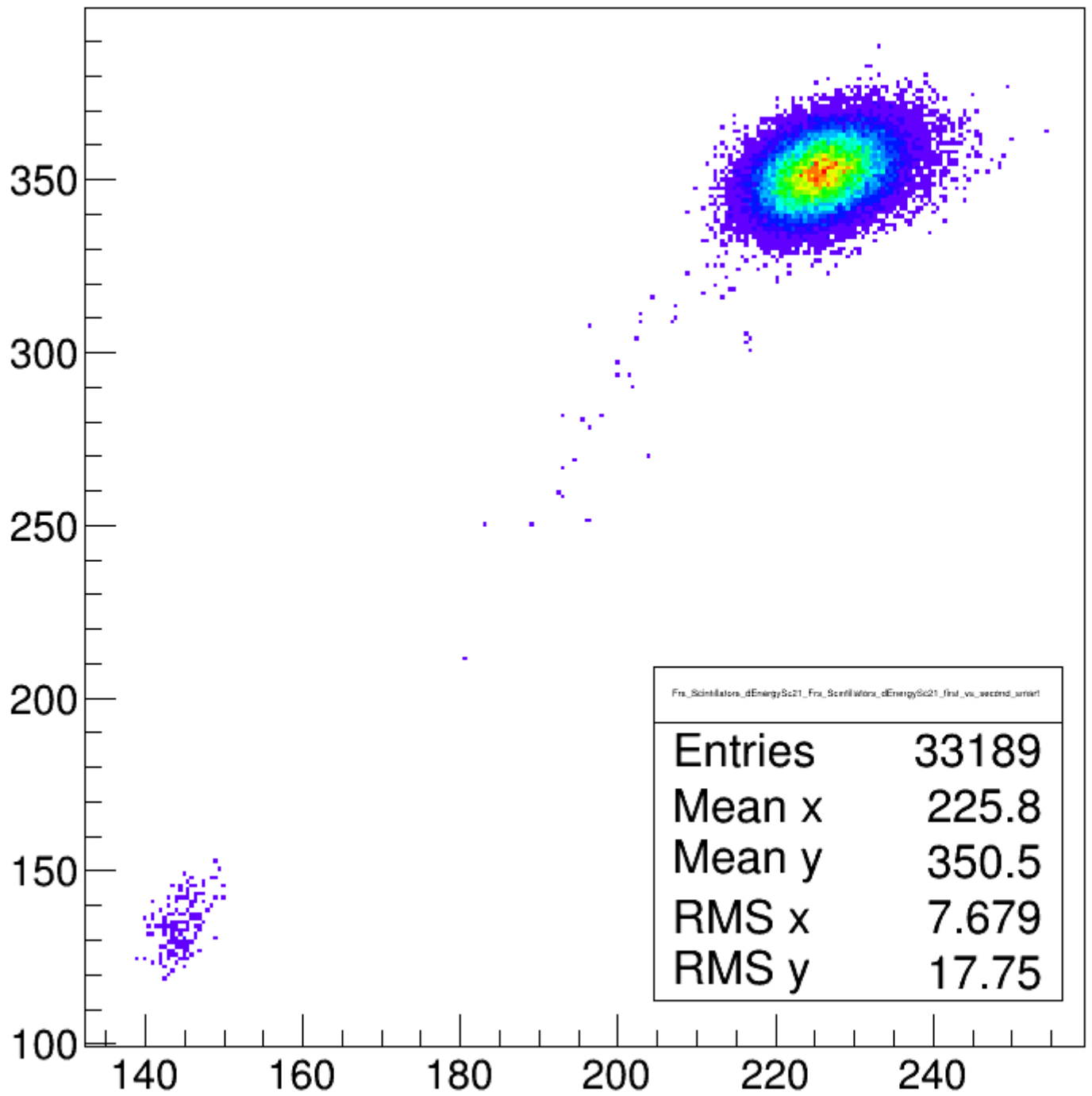


FRS PID - ^{46}Ti Setting (After Scintillator)



4) [dEnergySc21.png](#), downloaded 633 times

Sc21: first_vs_second



5) [dEnergySc41.png](#), downloaded 648 times

Sc41: first_vs_second

