

---

Subject: Re: Lambda Lambdabar simulations  
Posted by [donghee](#) on Thu, 17 Apr 2014 12:56:08 GMT  
[View Forum Message](#) <> [Reply to Message](#)

---

Dear Stefano,

I want to show you theta distribution for anti-proton and  $\pi^+$  from the antilambda decay in the lab frame.

Each 2D plots show that  $\theta_{\text{antiproton}}$  vs  $\theta_{\text{pion}}$  in the lab frame for the case of generated and reconstructed.

I used LambdabarLambdaPol 1.64GeV model and a perfect detector, which covers from 0 to 160 degree with perfect resolution and efficiency.

In each panel, you can find the dependence of  $\theta_{\text{lab}}$  distribution on the different  $\cos(\theta)_{\text{CM}}$  region.

I think that Panel2(Right up) is quite important clue for the acceptance lost.

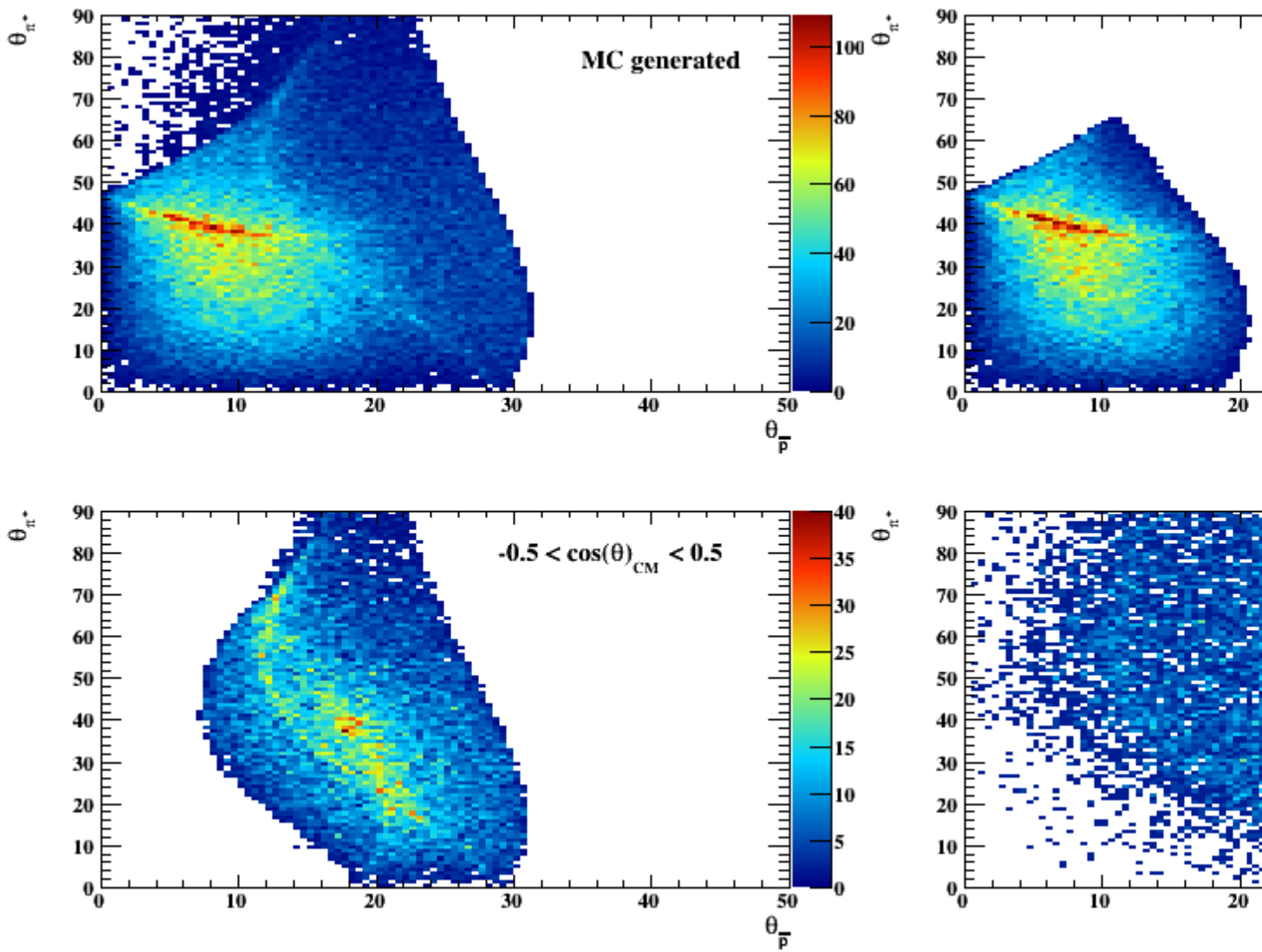
In lab frame, theta between 0 and 7 degree we could not reconstruct at all, due to V0 decay topology.

Best wishes,  
Donghee

---

#### File Attachments

1) [setup\\_test\\_acceptance\\_cos\\_theta\\_superdetector\\_gen.png](#),  
downloaded 963 times



2) [setup\\_test\\_acceptance\\_cos\\_theta\\_superdetector\\_reco.png](#),  
downloaded 948 times

