

---

Subject: Re: RICH and TOF geometry in simulation  
Posted by [Shyam Kumar](#) on Tue, 25 Feb 2014 02:40:34 GMT  
[View Forum Message](#) <> [Reply to Message](#)

---

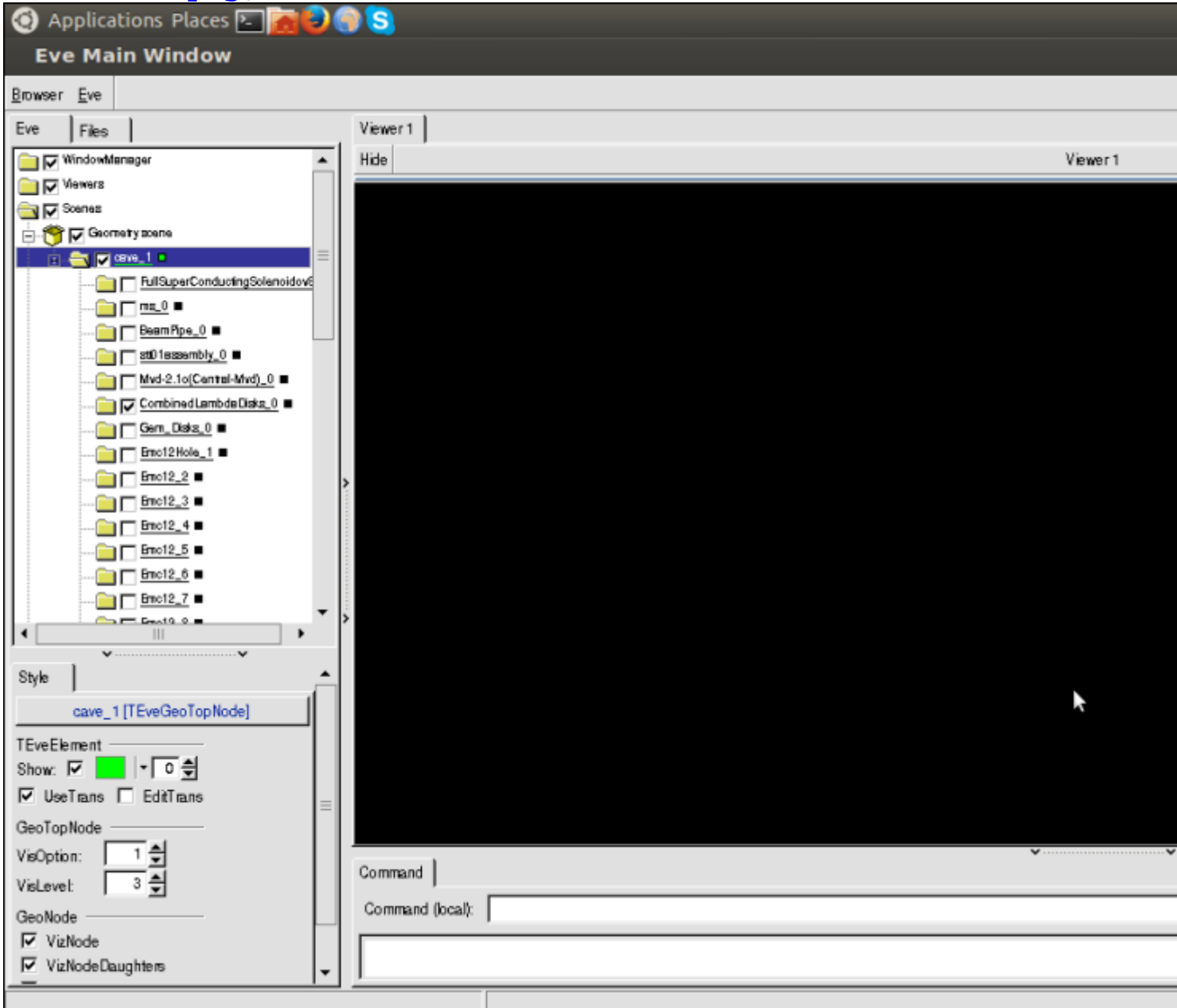
Hi,

I have faced the similar problem in the case of start detector to visualizing the geometry in event display. I have changed the vislevel from 3 to 4 in event manager window. This option you will get when you click sin sequence( Scene=>Geometry scene=> Cave volume). I am attaching the images in my case I have changed the vislevel. However geometry vsiulisation in detail I have done for sensors and support by using Geomanager.

## File Attachments

---

1) [start1.png](#), downloaded 791 times



2) [start2.png](#), downloaded 773 times

