
Subject: Re: PndKinVtxFitter Resoulution

Posted by [Simone Esch](#) on Tue, 30 Jul 2013 13:41:46 GMT

[View Forum Message](#) <> [Reply to Message](#)

Hello Stefano

I used the PndChiVtxFitter and got the following pictures:

They look even worse.

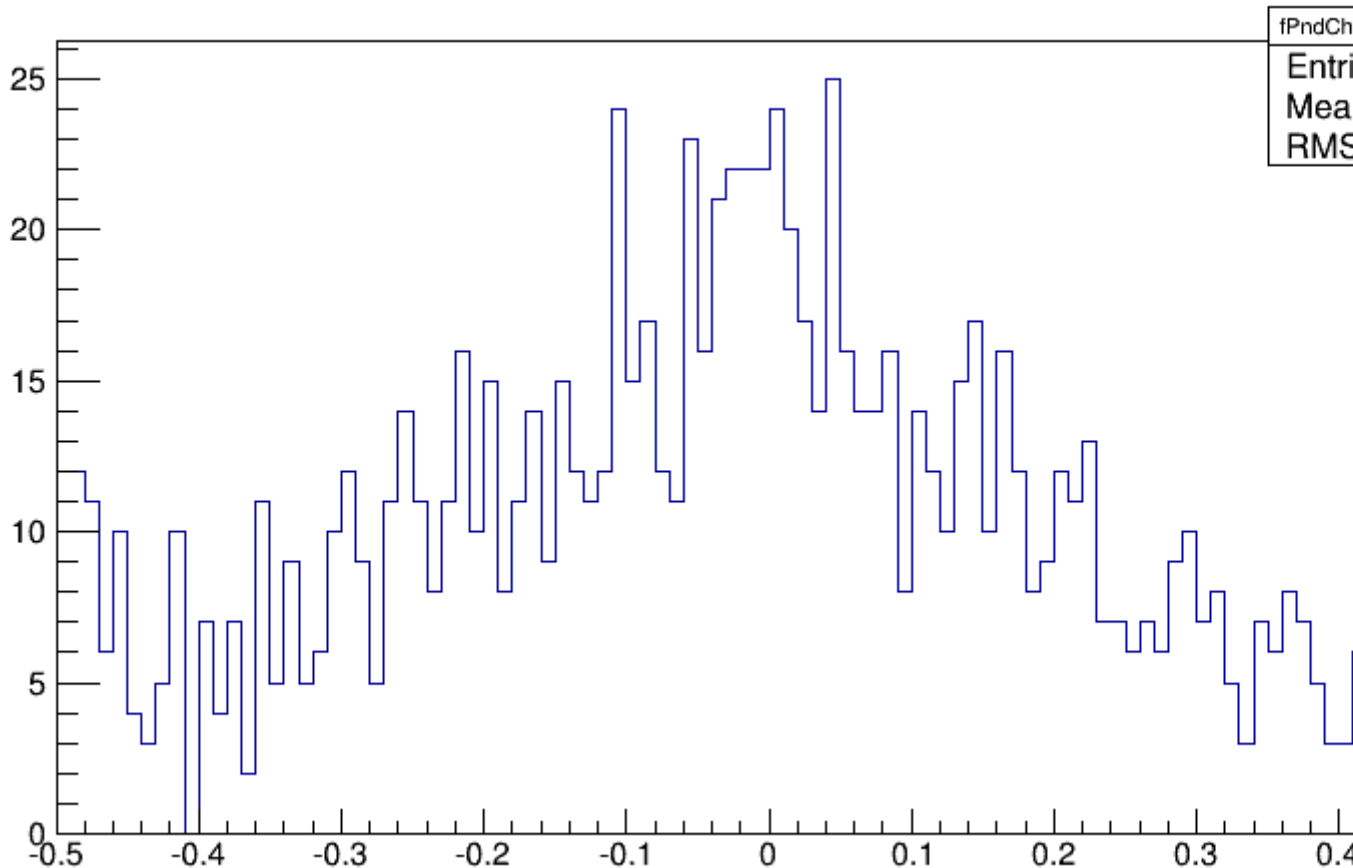
The Chi2 distribution looks even more strange (this is the distribution of all chi2, not just the best chi2 per event.)

Best regards
Simone

File Attachments

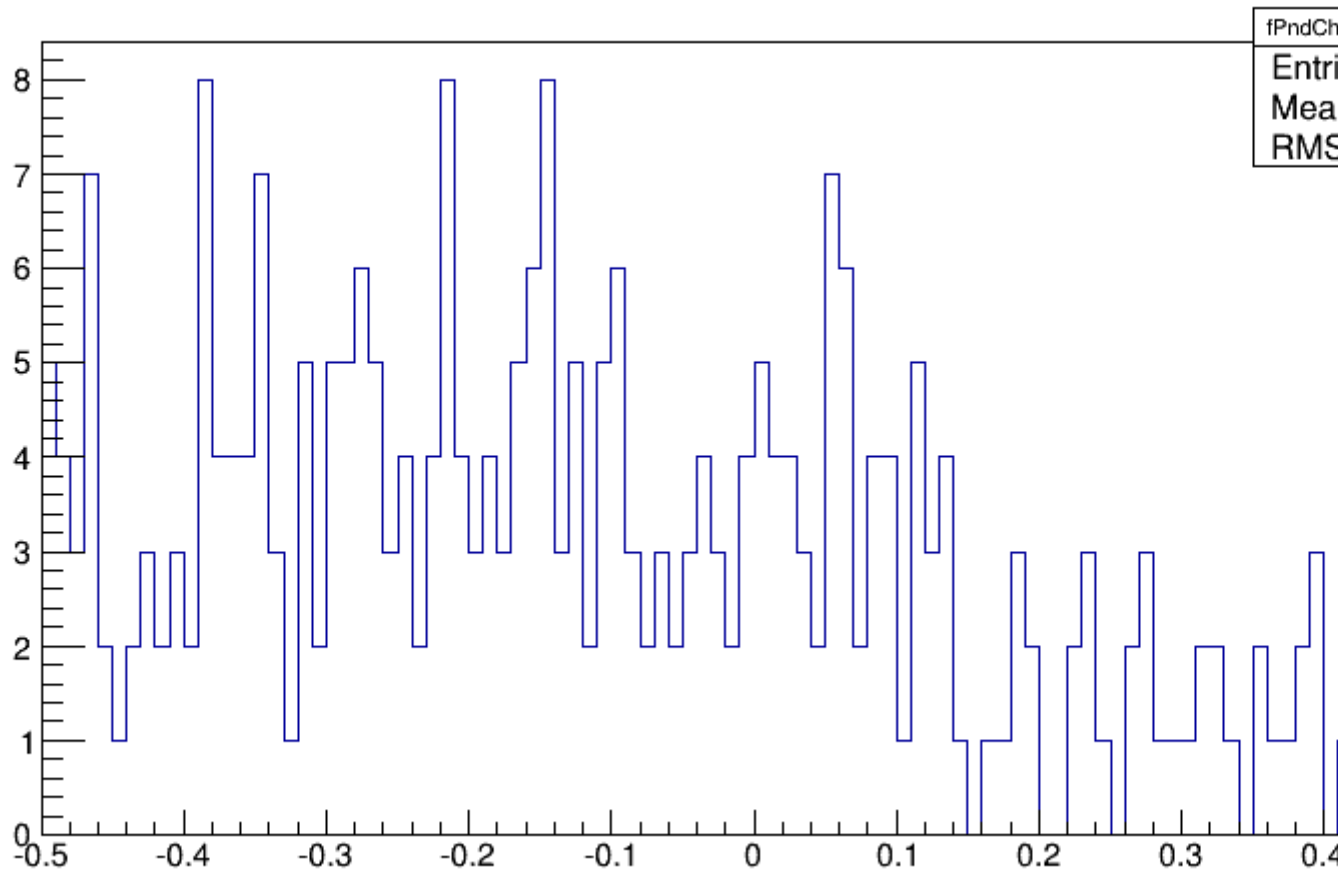
1) [pndchivtxfitter_rex.png](#), downloaded 1153 times

fPndChiVtxFitter_VertexRes_X



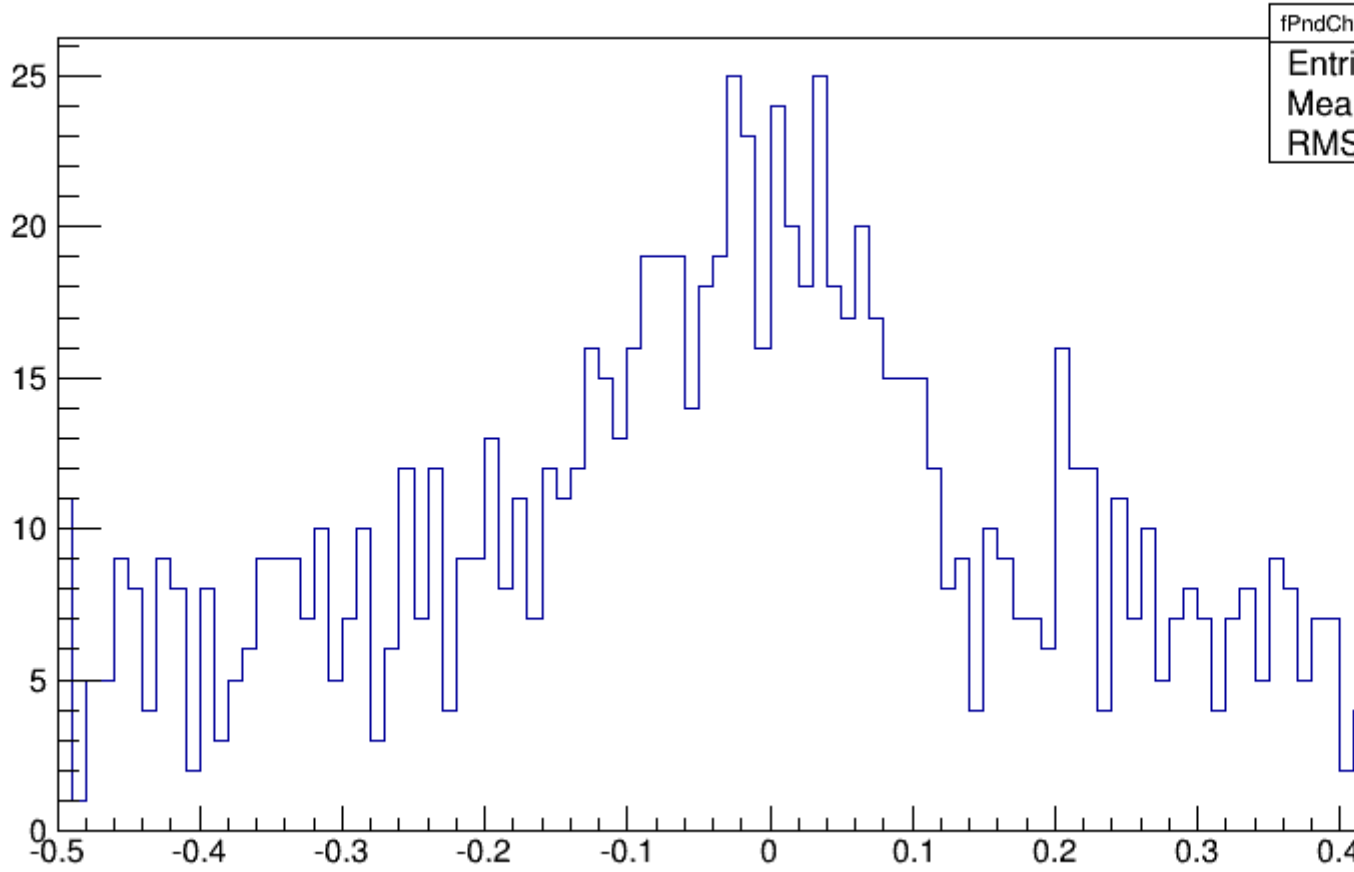
2) [pndchivtxfitter_resz.png](#), downloaded 1105 times

fPndChiVtxFitter_VertexRes_Z



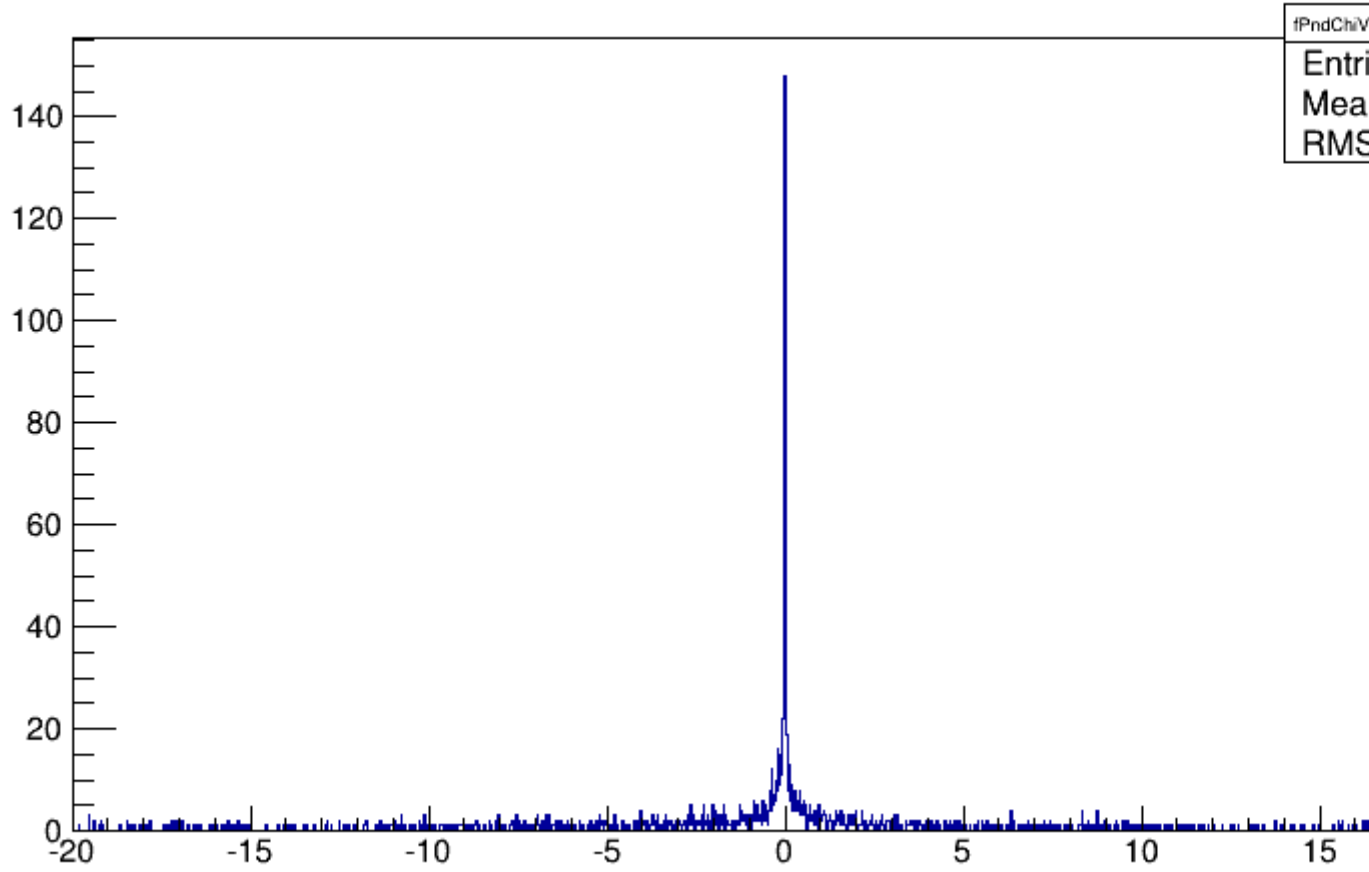
3) [pndchivtxfitter_resy.png](#), downloaded 1090 times

fPndChiVtxFitter_VertexRes_Y



4) [pndchivtxfitter_chi2.png](#), downloaded 1144 times

fPndChiVtxFitter_Chi2_distribution_all



fPndChiV
Entri
Mea
RMS