
Subject: Re: Using RKTrackRep in the Kalman
Posted by [StefanoSpataro](#) on Tue, 23 Jul 2013 14:54:19 GMT
[View Forum Message](#) <> [Reply to Message](#)

I have checked also fwd tracker, with muons at 1, 2, 4 GeV/c.
red GeaneTrackRep, blue RKTrackRep:

1 GeV/c

2 GeV/c

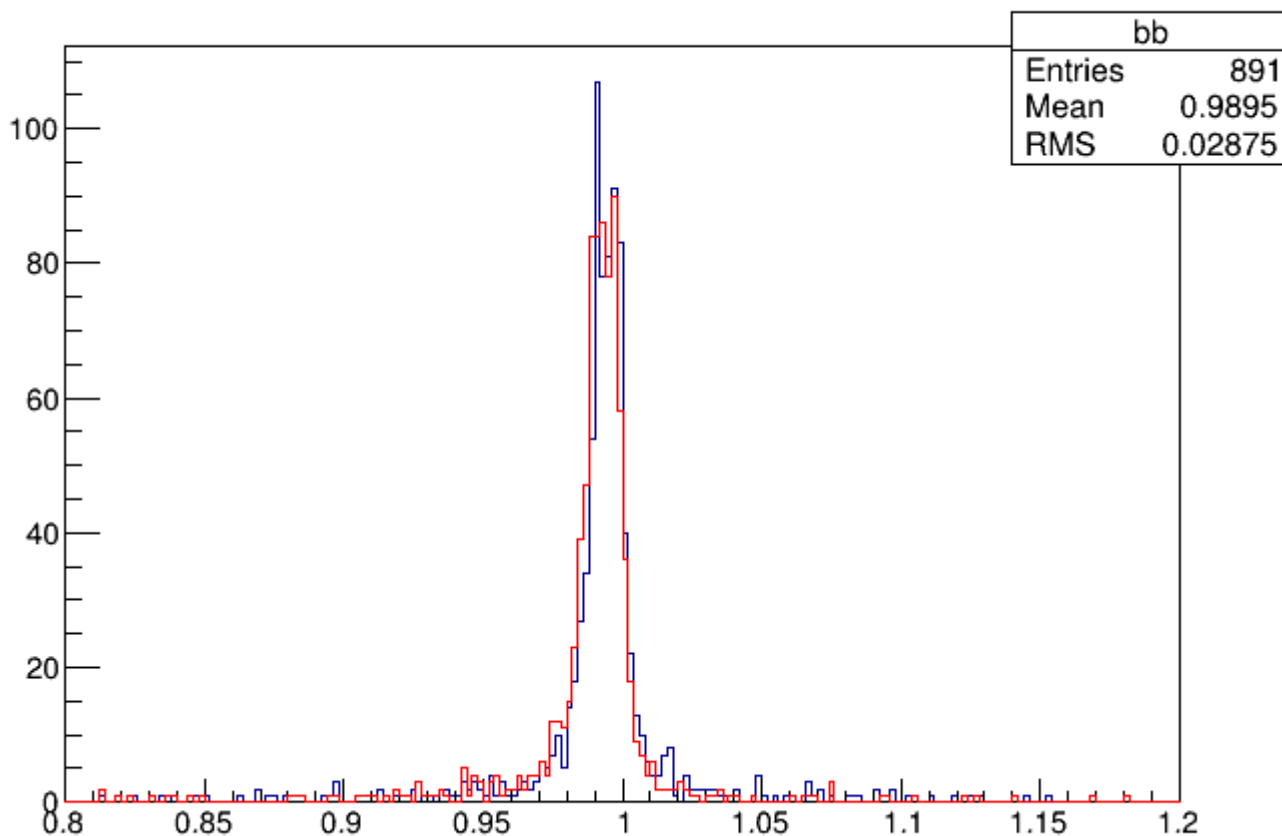
4 GeV/c

In this case RKTrackRep seems to provide a bit better results than Geane.

File Attachments

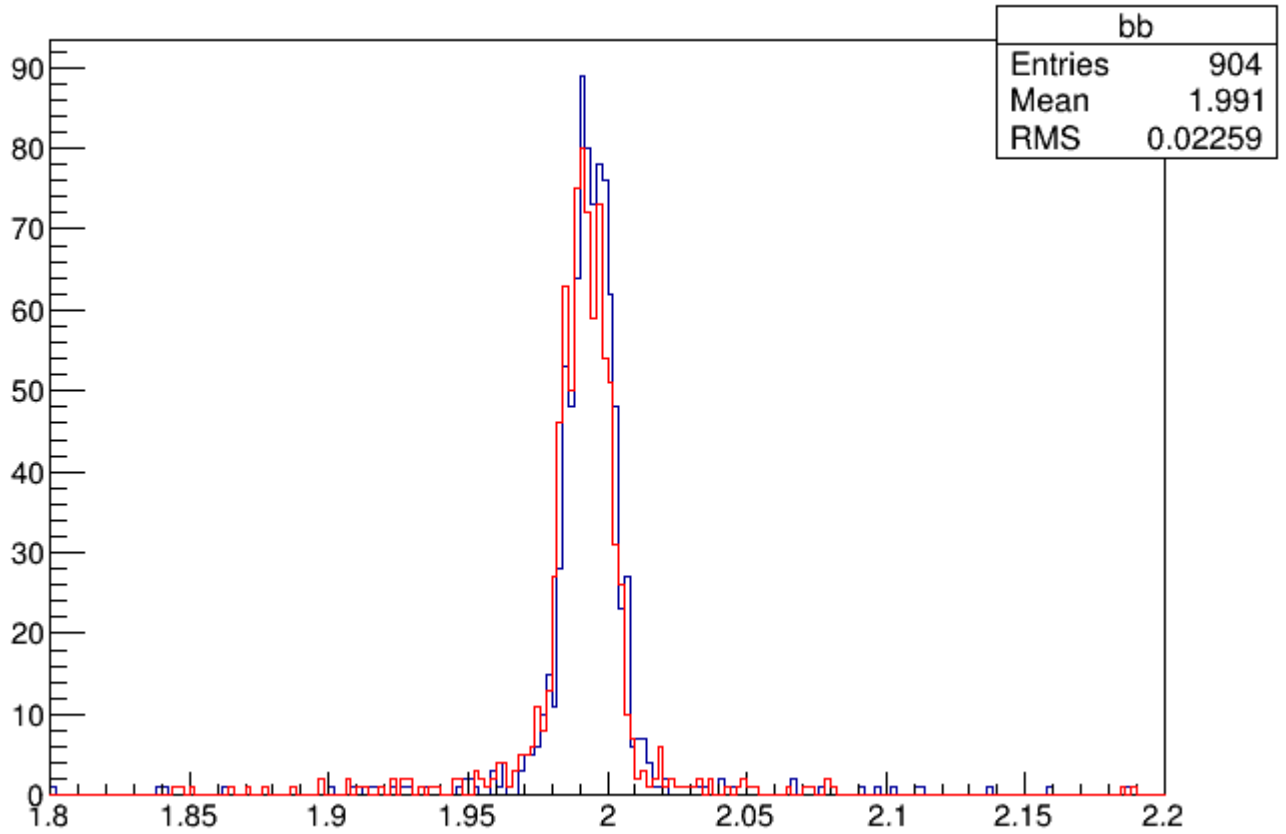
1) [compfwd1.gif](#), downloaded 1233 times

-1./{(FtsIdealGenTrack.fTrackParamFirst.fQp) {FtsIdealGenTrack.fFlag>0}}



2) [compfwd2.gif](#), downloaded 1244 times

-1./((FtsIdealGenTrack.fTrackParamFirst.fQp) {FtsIdealGenTrack.fFlag>0})



3) [compfwd4.gif](#), downloaded 1211 times

-1./((FtsIdealGenTrack.fTrackParamFirst.fQp) {FtsIdealGenTrack.fFlag>0})

