
Subject: Re: Modifications in Kalman
Posted by [StefanoSpataro](#) on Tue, 19 Mar 2013 12:52:58 GMT
[View Forum Message](#) <> [Reply to Message](#)

Hi,
I checked the differences for momentum reconstructions, using 10k muons at 0.5 GeV/c in the barrel.

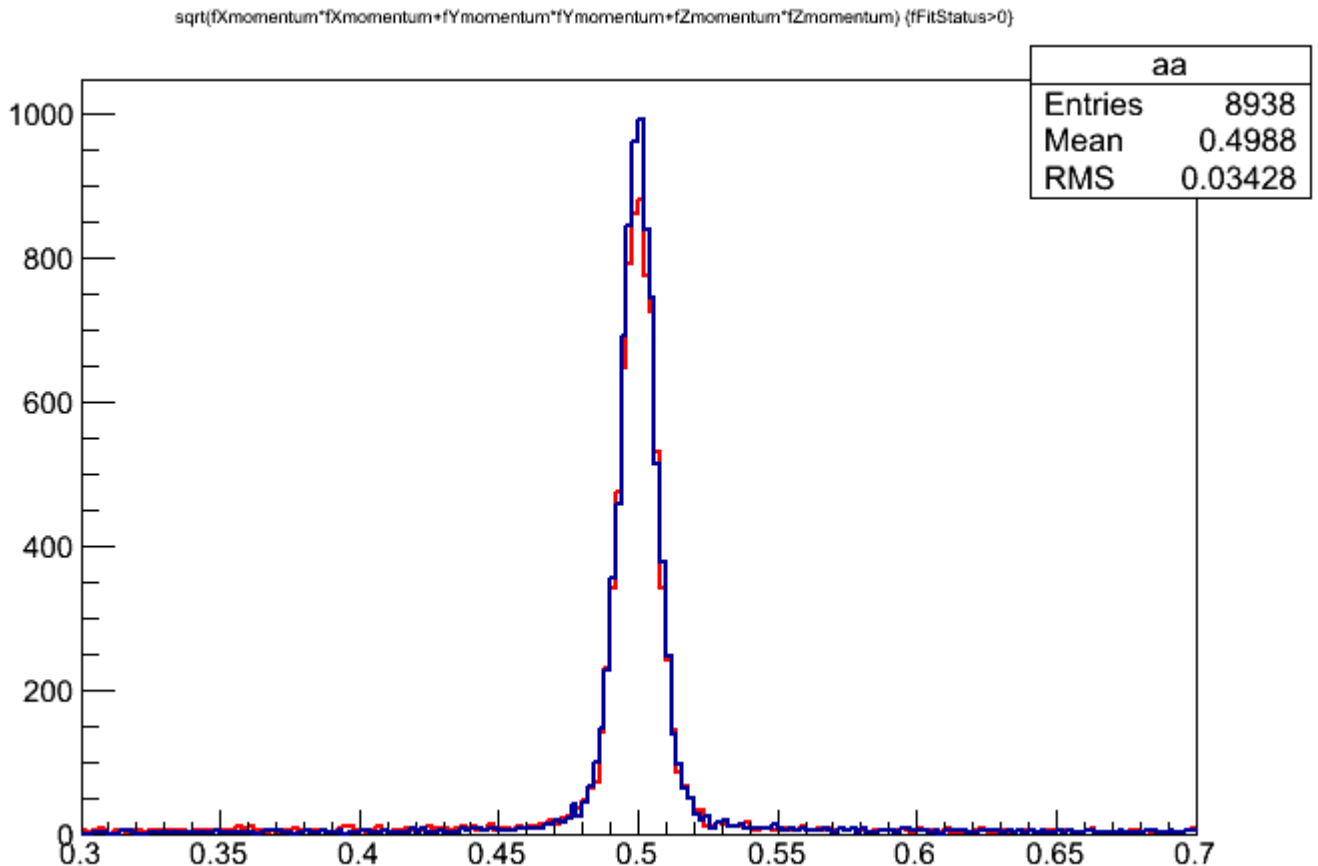
This the comparison w/ (blue) and w/o (red) backward propagation to the IP:

This the comparison with the standard initial plane (blue) and with the perpendicular plane (red)

It appears evident that the orientation of the plane does not affect the results, while w/o back propagation the counts are less. The latter point is not well understood by me.

File Attachments

1) [res_ip.gif](#), downloaded 407 times



2) [res_perp.gif](#), downloaded 423 times

sqrt(fXmomentum*fXmomentum+fYmomentum*fYmomentum+fZmomentum*fZmomentum) (fFitStatus>0)

