

---

Subject: Re: Modifications in Kalman  
Posted by [StefanoSpataro](#) on Tue, 19 Mar 2013 12:52:58 GMT  
[View Forum Message](#) <> [Reply to Message](#)

---

Hi,  
I checked the differences for momentum reconstructions, using 10k muons at 0.5 GeV/c in the barrel.

This the comparison w/ (blue) and w/o (red) backward propagation to the IP:

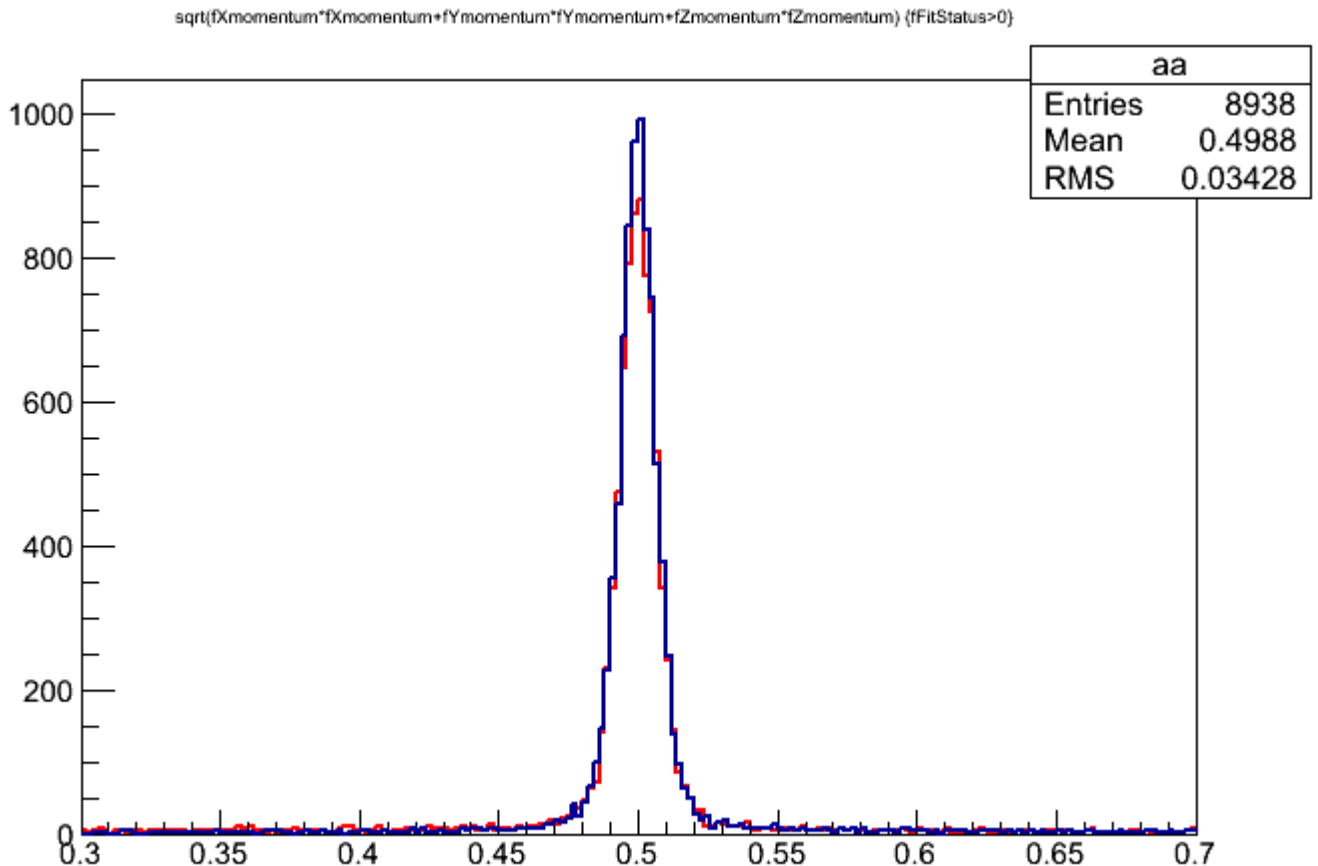
This the comparison with the standard initial plane (blue) and with the perpendicular plane (red)

It appears evident that the orientation of the plane does not affect the results, while w/o back propagation the counts are less. The latter point is not well understood by me.

### File Attachments

---

1) [res\\_ip.gif](#), downloaded 1114 times



2) [res\\_perp.gif](#), downloaded 1107 times

sqrt(fXmomentum\*fXmomentum+fYmomentum\*fYmomentum+fZmomentum\*fZmomentum) (fFitStatus>0)

